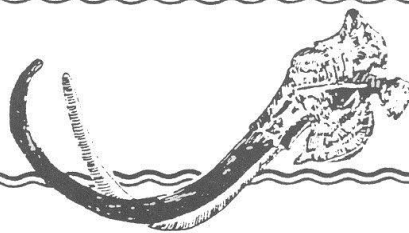


# Dallas Paleontological Society

# The Fossil Record

P. O. BOX 710265, DALLAS, TEXAS 75371



Vol. 1 No. 1 Dec. 84

## Report of the Inaugural Meeting

On November 14, 1984 the inaugural meeting of the Dallas Paleontological Society was held in the auditorium of the Dallas Museum of Natural History. Presiding over the meeting was Temporary President Joseph Gallo who welcomed those in attendance and gave a brief explanation of the purposes and goals of the society.

The remainder of the temporary officers were then introduced. Each gave a brief statement of their roles and a sampling of future events. The Program Director gave notice of upcoming speakers and the Field Trip Director explained the details of the society's first field trip.

Charles Finsley, Curator of Earth Science and Botany at the Dallas Museum of Natural History, was then introduced and gave a short slide presentation on current happenings at the Museum and summarized his thoughts on the directions that the society might follow.

Total attendance at the meeting was in excess of 100, with 35 becoming members of the Dallas Paleontological Society

## December Program

At the upcoming December 12th meeting, DMNH Earth Science Curator Charles E. Finsley will discuss "Were I Think We Are"; a meeting designed to point out through various of the Museum's past discoveries just which fossils and fossil beds in Texas are most "productive." Finsley will discuss the possible ways a non-professional collector can accomplish scientifically worthwhile goals. Some of his slides will be in 3-D. Since this is our Christmas meeting, a cup of good cheer will be provided. I'm sure you will not want to miss out.

## Bylaws and Constitution

Preliminary copies of the By-laws and Constitution of the Dallas Paleontological Society have been submitted and will be available for review and comment at the December meeting. The Executive Committee will meet later in the month to discuss any input from society members and to make any changes deemed necessary.

The Executive Committee is especially concerned with member input on the subjects of eligibility for membership, classification of membership, and termination of membership as well as dues. Details of these subjects will be in the proposed Constitution. Please look over a copy at the next meeting.

## DECEMBER MEETING

The December Meeting of the Dallas Paleontological Society will be held 7:00 pm Wednesday, December 12, 1984 at the Dallas Museum of Natural History in Fair Park.

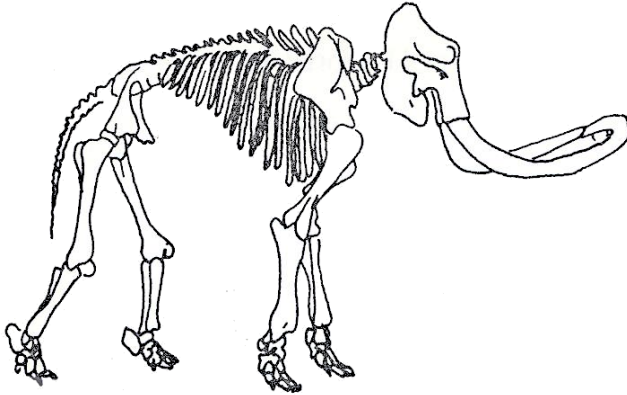
Copies of the proposed Bylaws and Constitution will be made available. Please bring a friend and prepare to help us get the Society rolling.

## Temporary Executive Officers

President	Joseph Gallo
Vice-president	Bill Lowe
Secretary	Chris Kline
Treasurer	Bob Hall
Co-editors	Dennis Campbell Evelyn Luciani

## Additional Officers

Program Director	Joe Kennedy
Field Trip Director	Ken Smith



## A Mammoth Find in Seagoville

Anyone who has done their share of fossil hunting knows that one doesn't always find what one seeks. As a matter of fact, I think most folks active in this field will say that one has to "pay their dues" before they come up with a significant find. The discovery of mammoth remains in Seagoville by Ken Smith and Joe Kennedy on October 31 of this year was a happy reward for some dues long paid.

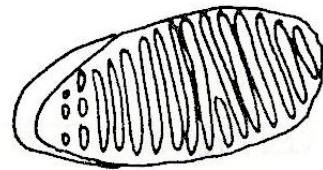
The site is located in south-east Dallas County in one of the commercially operated sand and gravel plants along the Trinity River. Currently, the machines are excavating to 55 feet below the present land surface. At this depth they are removing material from what appears to be the Hill gravel member of the Trinity River T-2 terrace, Hill/Schuler formation. <sup>1</sup>

The stratigraphy here consists of coarse gravels atop bedrock (Hill member) overlain by laminated sands and sandy clays (Lower and Upper Schuler members respectively). This stratigraphy is common along much of the Trinity River and serves as evidence of the Trinity's ancient activities. A thin limonite layer (2-10m) separated the Hill gravel

<sup>1</sup> Bob H. Slaughter et al, The Hill-Schuler Local Faunas of the Upper Trinity River, Dallas and Denton Counties, Texas (Austin: Bureau of Economic Geology, UT December, 1962).

and Schuler sands. It was in this layer that the remains of the mammoth and associated bones were discovered. Mammoth material at this site consisted of two tusks, two upper teeth with jaw fragments, the left scapula, a tibia, and several pieces of fragmented bone. Identifiable material associated with the mammoth remains were a vertebrae of a horse and a fused radius and ulna of a bison. A Mammoth Find in Seagoville

All remains at this site exhibited stream abrasion and encrustation of the limonite mineral, both of which are characteristics of fossil bone found in this strata. The positions of the teeth and tusks indicated that at one time most or all of the skull had been present and possibly served as a trap in which the remaining material was collected. Due to the fact that this site contained the remains from at least three different animals, and that each piece exhibited signs of stream abrasion, it can be assumed that they were redeposited at this site by river movement, and that death had actually occurred elsewhere. After securing permission from the landowner, a complement of persons from DISD, Dallas Museum of Natural History volunteer group, and East field College assembled to excavate the remains on the following Saturday, November 3. After being completely exposed and mapped the bones were encased in plaster to facilitate their removal from the ground and were transported to the DISD Environmental Center. Here, they will be on loan for use in restoration technique classes and earth science programs taught to DISD students by Center staff.



## Gem and Mineral Show Booth

On the spur of the moment, several members of the fledgling Dallas Paleontological Society put together an exhibit booth for the Dallas Gem and Mineral Show held November 10 and 11 at Fair Park.

Displayed for viewing were fossils from members' private collections as well as two pieces from the Seagoville mammoth site in the process of being restored. The primary reason for the exhibit was to promote interest in the new society and help educate the public on the topic of paleontology.

Many thanks are due Dale Wheeler of the Dallas Gem and Mineral Society, the Dallas Museum of Natural History for use of their tools and equipment, and Museum employee and Society Co-editor Evelyn Luciani for her artistic ability in sign production.

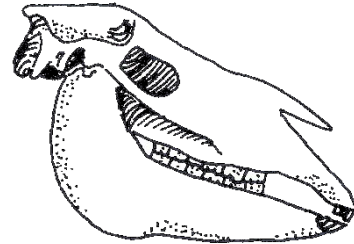
## Sulphur River Trip Report

On the weekend of November 17 and 18, members of the Dallas Paleontological Society and students from Edison Environmental Academy and their parents traveled to several fossil sites along the Sulphur River north of Commerce, Texas. We all may have been better off sitting at home watching the TCU Frogs take on the UT Longhorns. Cold, very rainy weather put a literal damper on much of the weekend's activities.

Despite the meteorological problems, most folks (about 45 in all) managed to locate some interesting material common to the stratigraphy of the area. These included Cretaceous ammonites, baculites, gastropods, shark teeth, bones from marine reptiles such as mosasaur and plesiosaur, as well as, Pleistocene mammalian remains and early tools of man.

In the near future we will give this locale more attention; that is, as soon as everyone gets well. For more information on

the Sulphur River see the Field Trip Director.



## WHY BELONG?

It is the intent of the Dallas Paleontological Society to help advance the science of paleontology. To achieve this goal, the Society expects to:

1. Establish lines of communications between collectors and professionals;
2. Maintain communications with persons in related fields of interest and with the public;
3. Establish educational, vocational and professional standards and encourage adherence to them;
4. Enhance the scientific stature of hobbyists;
5. Keep abreast of studies and research;
6. Share ideas and seek solutions to mutual problems;
7. Provide opportunities for fellowship with persons having similar interests;
8. Record the activities of persons participating in this field.

Why do you belong? Please share with the members of the Society several of your intentions.

## VOLUNTEERS WANTED

The Shuler Museum of Paleontology at SMU would appreciate a few volunteers for collection work. Contact Louis Jacobs, XXXX.

# **THE FOSSIL RECORD Newsletter of the Dallas Paleontological Society**

Co-editors: Dennis Campbell  
Evelyn Luciani

Please forgive the seemingly rushed appearance of this initial newsletter. The appearance is certainly not deceiving. As we get some of these holidays behind us, you will see an improvement.

We are presently looking for immediate, constructive ideas about the newsletter from Society members and others. We are particularly interested in printing hard, factual, scientific information obtained by field collection.

Possible future newsletter contributions may also include short abstracts of articles and books with a paleontological slant, restatement of current events in this field, a listing of your favorite, and most useful, geological books, listings of specimens in your collections, descriptions of specific personal interests and projects, and field trip reports.

Let me assure you, the Co-editors will do their part, but this material must come from all members of the Society.

If you have a suggestion or would like to submit an article, please contact

Dennis Campbell  
XXXX Atlantic XXXX  
Dallas, Texas  
(XXX) XXXX

## **Dallas Paleontological Society The Fossil Record**

XXXX Ramsey, Dallas, Texas 75216

## **Society Membership**

If you would like further information regarding Dallas Paleontological Society participation and membership, please contact any Executive Officer.

Qualification for membership is an active interest in paleontology. The \$25.00 annual membership dues will provide you with a monthly newsletter and access to Society meetings and trips.

If you are not a member, please complete the membership form below and remit \$25.00 (check payable to Dallas Paleontological Society) to

Joseph Gallo  
XXXX Ramsey  
Dallas, TX 75216

Charter Membership will be available only to the first of the year, so get your dues in soon.

Name: \_\_\_\_\_  
Address: \_\_\_\_\_  
Phone (work): \_\_\_\_\_  
(home): \_\_\_\_\_

## **THANKS**

Society members owe a special thanks to Karen Turner, DMNH Curator of Education and Public Information, for her splendid efforts in the printing of this newsletter. Thank you, Karen.