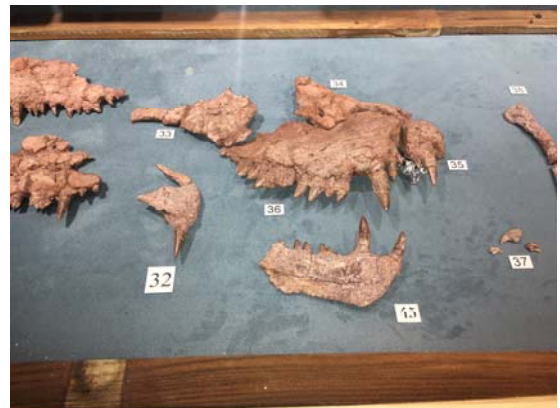


## A FIELD TRIP TO THE WHITESIDE MUSEUM

SEPTEMBER 29, 2018

On Saturday, September 29, Bob Williams and Dennis Gleason took a trip to check out the Whiteside Museum, located in Seymour, Texas. The Whiteside Museum ([www.whitesidemuseum.org](http://www.whitesidemuseum.org)) boasts one of the premier research facilities for the collection, processing and study of Lower Permian fossils of North Central Texas. The Dallas Paleontological Society has been a supporter of the museum since it opened. Bob was present on the day the museum opened and remarked how significant the displays of collected fossils were. We were greeted by Chris Flis, Museum Director and were given the “cook’s” tour of the lab and processing facilities. Chris remarked that there are countless thesis topics hidden within the samples collected to date for eager and willing student scholars who are willing to devote the time and dedication to study the samples recovered to date.

Upon entering the exhibit hall the first display one encounters is a presentation of numerous samples of vertebrae, ribs, leg bones and jaws of several Permian fauna. These could best be described as lizards or pre-dinosaurs. Some of the creatures identified are; Diadectes, Dimetrodon, Edaphosaurus, Varanosaurus and Eryops. A montage of these samples are presented below.



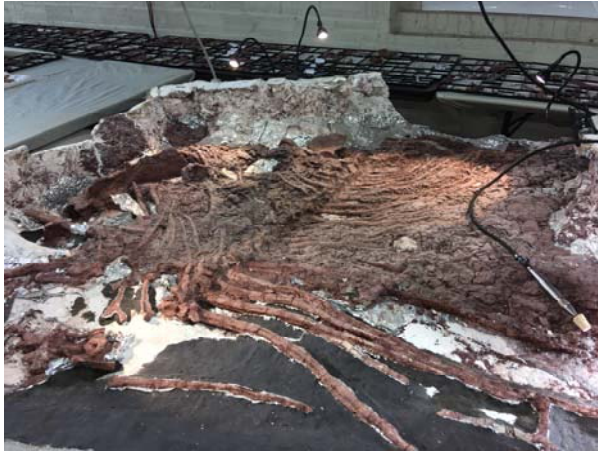
One of the several exhibits is the collection of Permian leaves on display. Here is Bob standing beside the exhibit. We were particularly impressed with the detail of the leaf structure preserved in the samples on display.



For those of you who are collectors of shark teeth, there is a large display of teeth from modern to ancient varieties, including megalodon and Permian aged samples.



No trip to a legitimate lab would be complete without a look at the lab and ongoing work.



The Director, Chris Flis, pictured above with Bob Williams welcomes anyone who is interested in volunteering at the dig site or in learning how to process the specimen when they are delivered to the lab from the field location. For more information you may contact him by email at:

Chris Flis

[dinodigger@gmail.com](mailto:dinodigger@gmail.com)

[www.whitesidemuseum.org](http://www.whitesidemuseum.org)

832-374-4145